

BUILDING DESIGN

The factory building is designed to have space for raw material, assembling area, testing/quality assurance, packaging, storage and waste disposal areas. To include these areas, the proposed project design incorporates two storey Building (Ground Floor and First Floor or G+1) with total built up area of 2,036.65 square meters for ground floor and 375.60 square meters for the first floor as indicated in the floor layouts in Figure 1 (b)-(c) and summary of floor areas in Table 1.

Table 1: Summary of Floor Areas

Item	Description	Area [m ²]	Remarks
A.	Ground Floor		
1.	Reception & Lounge	13.50	
2.	Loading & Unloading Bay	40.00	
3.	Raw Materials Storage	146.00	
4.	Assembly Area	1,024.00	<i>10 Assembly Lines, spaced at 1.5m</i>
5.	Testing Area	98.00	
6.	Quality Control - Hardware	70.00	
7.	Quality Control - Software	70.00	
8.	Display Area	25.00	
9.	Factory Supervisors Office	16.00	
10.	Final Product Storage	140.00	
11.	Washrooms	70.00	
12.	Changing Room	70.00	
13.	Cleaners Cupboards	4.00	
14.	Common Room	15.00	
15.	Reserve Area	50.00	
16.	Circulation	185.15	<i>10% of the area of the building</i>
B.	Mezzanine/First Floor		
1.	CEO Office	20.00	
2.	Admin & HR Manager Office	12.25	
3.	Factory Manager Office	12.25	
4.	Sales & Marketing Manager Office	12.25	
5.	Chief Accountant Office	12.25	
6.	Sales & Marketing Office	28.00	
7.	Human Resource Office	13.50	

Item	Description	Area [m ²]	Remarks
8.	Accountant/Cashier Office	13.50	
9.	Procurement & Logistics Office	13.50	
10.	Drivers Lounge	17.50	
11.	Small Meeting Room	24.00	
12.	Conference Room	75.00	
13.	Pantry	9.00	
14.	Reserve Area	50.00	
15.	Circulation Space	62.60	
	Total Area	2,412.25	



Figure 1 (a): Proposed Industrial Factory Layout



Figure 1 (b): Ground Floor Layout

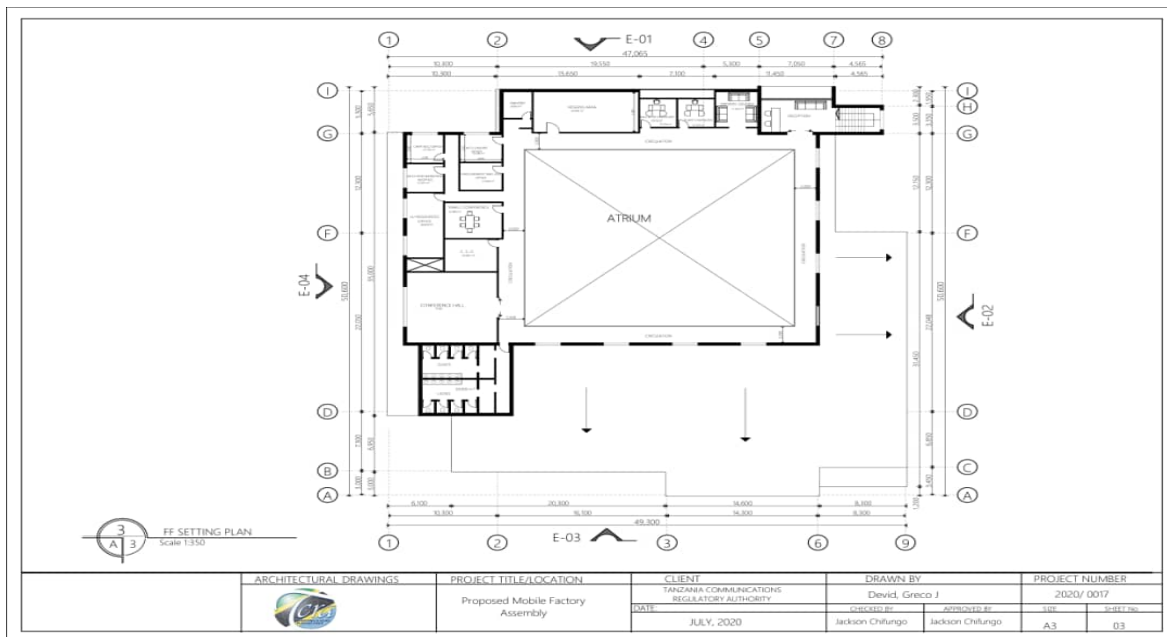


Figure 1(c): First Floor Layout



Figure 1 (d): Front Elevation



Figure 1 (e): Right Elevation



Figure 1 (f) Left Elevation



Figure 1 (h): Rear Elevation



Figure 1 (i): Aerial Elevation