

PROJECT LOCATION ACCESSIBILITY CONNECTIVITY AND WEATHER CONDITION

1.1 Project location

The proposed project will be situated at Plot No. 413 Block 'A', Nyamhongolo Ward, Ilemela Municipality, Mwanza Region, Tanzania. The specific coordinates of the site are $02^{\circ}32'01.03''\text{S}$ and longitude $33^{\circ}00'42.39''\text{E}$ having elevation of 4165ft/1269m AMSL. The Ilemela Municipality lies on the southern shores of Lake Victoria within Mwanza Region. It borders with the Magu Municipal in the East and Mwanza City Council in the South while to the North and West, there is Lake Victoria.

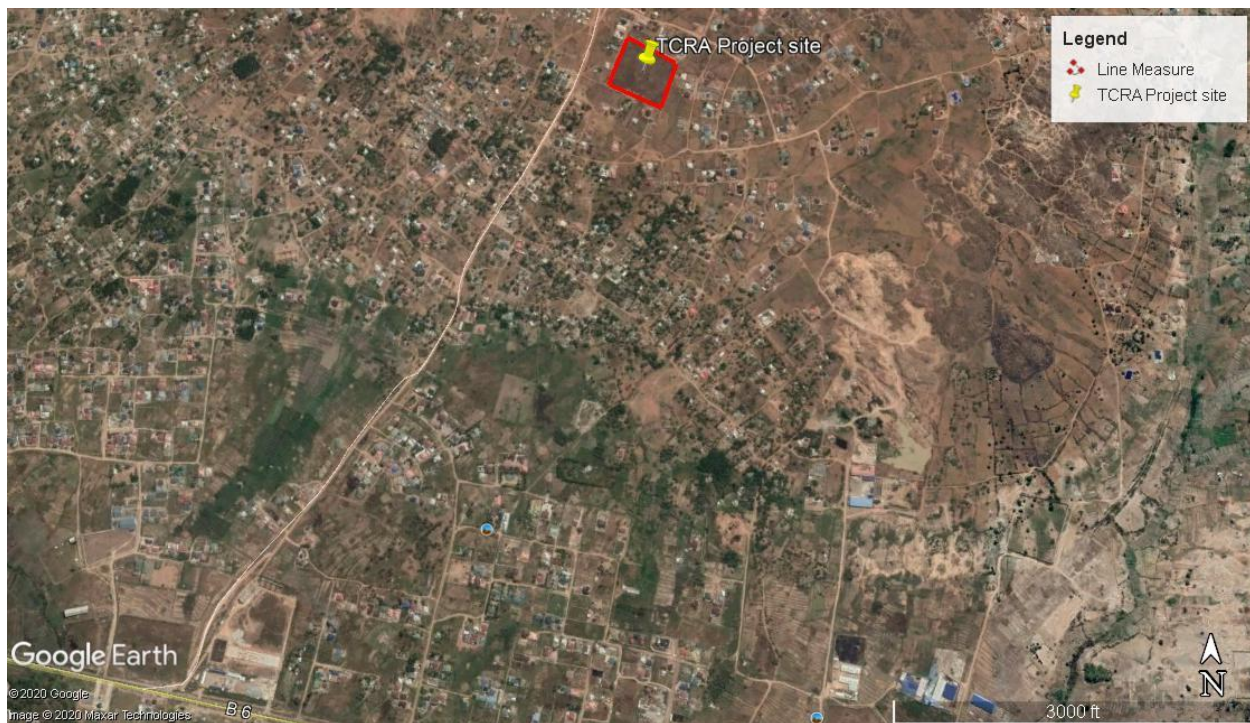


Figure 1: Google Map showing the location of the project area from the Mwanza-Musoma road Source: Google, 2020

1.2 Location Accessibility

Accessibility to the project site is mainly by Mwanza-Musoma highway from Mwanza City Centre. The project site is located approximately 20 km from the Mwanza City Centre and about 2 km from the proposed new under construction Nyamuhongoro bus stand. The 2 km access road adjoining the site with Mwanza-Musoma highway is not tarmac but it is well constructed and is accessible in all weather (meaning during rain and dry season).

1.3 Utility Connectivity

The smart phones assembling factory location is well served well with TANESCO electricity power infrastructure and fresh water from the Mwanza Urban Water Supply and Sanitation Authority (MWAUWASA).

1.4 Weather conditions

Mwanza city, famously known as the “Rock City” is the second largest city in Tanzania after Dar es Salaam. The City it is surrounded with Lake Victoria.

It serves as an administrative and service Centre for the Mwanza Region, Lake Victoria zone and neighboring countries of the “Great Lakes Region” and is located in the northern part of Tanzania. It is the main harbor on Lake Victoria which borders Uganda to the North West and Kenya to the North East. It is also a major transit Centre of goods destined for neighboring countries such as Uganda, Rwanda, Burundi and Democratic Republic of Congo.

Mwanza is one of the key economic regions for Tanzania with its main economic activity being Agriculture, industrial establishments, mines and trade.

Climate and average monthly weather in Mwanza is as follows:

- The average annual temperature is 23°C
- Most rainfall (rainy season) is seen in April, November and December.
- The warmest month is October.
- On average, the coolest month is July.
- The driest month is September.